
DEMOCRATIC BACKSLIDING THROUGH FAST-TRACK LEGISLATION PRACTICES: A SOCIO-POLITICAL STUDY OF THE EROSION OF DEMOCRATIC VALUES IN INDONESIA

Iskandar Syukur

Universitas Islam Negeri Raden Intan Lampung, Indonesia

Email: issyukur@yahoo.com

Abstract

The development of democracy in Indonesia has shown changes in the public policymaking process, marked by the increasing use of legislative mechanisms that occur in a relatively short period of time. This situation raises concerns because the regulatory process is not only related to the need for effective governance but also relates to the relationship between the state, political institutions, and society in democratic life. Changes in the legislative process also affect the scope for public participation, power relations in decision-making, and the quality of public involvement in the political process. This study aims to analyze the practice of FAST-TRACK LEGISLATION in relation to changing political relations and its implications for the quality of democracy in Indonesia. This study uses a qualitative approach, collecting data through a literature review obtained from various sources, such as scientific articles, previous research results, books, and documents relevant to the research focus. The results indicate that the practice of FAST-TRACK LEGISLATION not only influences the regulatory formation process but also influences the patterns of relationships between actors in the policymaking process. These changes impact the scope for public participation, the level of public trust in political institutions, and the pattern of public oversight of state policies. Changes in the legislative process have implications for the quality of democracy in Indonesia because they affect the balance of relations between the state, political institutions, and society in the process of organizing national life.

Keywords: *Democratic Backsliding, Fast-Track Legislation, Democracy, Political Participation, Public Policy.*

A. INTRODUCTION

The development of Indonesia's democratic system after the reform era initially showed a trend of change that offered great hope for the establishment of a more open, participatory, and responsive form of governance to the needs of the people. The political changes that occurred during this period introduced various new mechanisms in state administration that enabled public involvement in the public policy-making process. Various state institutions strengthened their functions and authorities, while civil society began to occupy a larger role in the oversight of government policies. This situation created optimism for the development of democracy, which was seen as no longer centered on the dominance of power concentrated in certain actors, but rather moving toward a more open pattern of political relations involving various elements of society. This hope grew stronger with the increasing development of the media, access to information, and growing public awareness of their political rights (Syukri, 2024).

However, the journey of Indonesian democracy in recent years has demonstrated a far more complex dynamic than the initial expectations that developed during the reform era. Various political developments demonstrate that the democratic process does not always move linearly toward a stronger and more mature state. Amidst increasing demands for government effectiveness and accelerated national development, various public policies have shown a

tendency toward relatively short decision-making processes. This speed is evident not only in the implementation of government programs but also in the process of formulating regulations that have a broad impact on people's lives. On numerous occasions, the legislative process has progressed relatively quickly compared to the complexity of the substance being discussed, eliciting a variety of responses from the public and groups concerned with the quality of democracy (Hausknost & Hammond, 2020).

These developments have given rise to various debates regarding the relationship between the effectiveness of decision-making and the quality of the democratic process itself. On the one hand, accelerated legislation is often viewed as part of the government's need to respond to rapidly evolving social, economic, and political dynamics. Changing global conditions, investment needs, technological developments, and demands for bureaucratic efficiency are frequently cited as reasons for pushing for a shorter legislative process. Governments and policymakers face increasing pressure to produce decisions quickly to adapt to changes occurring at both the national and international levels. This situation places speed as a crucial indicator in assessing the effectiveness of government performance (Salvador & Sancho, 2023).

On the other hand, an overly strong orientation toward accelerating the policy process raises questions about the extent to which adequate attention is paid to the substance and process of regulatory development. The development of regulations inherently involves various interacting interests, including those from the government, legislative bodies, community groups, social organizations, and various other actors. This process is not only concerned with the formulation of regulations but also with efforts to build public legitimacy through the involvement of various parties in the deliberations. When the legislative process proceeds quickly, the space for dialogue, discussion, and exchange of views can become narrower, giving rise to concerns about a decline in the quality of public participation in the policy-making process (Hinterleitner et al., 2024).

Amidst various developments in Indonesia, a number of regulations have garnered significant public attention due to their rapid development and the resulting controversy. Various forms of public response have emerged through criticism, academic discussions, media coverage, and even demonstrations by various community groups. These reactions demonstrate that the regulatory process is not merely viewed as an administrative or procedural activity, but also as a political process that directly impacts the relationship between the state and society. When a policy is perceived as being created through a process lacking public involvement, the issues that arise are no longer limited to the substance of the regulation but also concern trust in the political process itself (Napitupulu et al., 2024).

This situation is increasingly serious to address because the level of public trust in political institutions is closely linked to the sustainability of the democratic system. Public trust is not formed instantly, but rather through a long process involving public experience with the performance of state institutions and the quality of the relationship between the government and citizens. When the public begins to perceive limited space to express their aspirations, the potential for the perception that the decision-making process is influenced more by specific interests than by the broader public interest arises. This kind of perception can give rise to various socio-political consequences, ranging from increasing public apathy towards the political process to the emergence of tensions between the public and policy makers (Mahmud, 2021).

This phenomenon also demonstrates a shift in power relations within the regulatory process. Contemporary political dynamics demonstrate that the policymaking process is increasingly influenced by various strategic considerations related to political stability, power consolidation, economic interests, and the need to maintain political support. These interests can ultimately influence how policies are formulated and decided upon. Under certain

circumstances, the regulatory process is no longer merely a meeting place for diverse public aspirations but has also evolved into an arena that demonstrates the interaction of power between various actors with varying degrees of influence (Rosenbloom et al., 2019).

In Indonesia, this development has coincided with increased public attention to political issues and public policy. The development of information technology and digital media has given the public broader access to a wide range of information regarding the political process. Various stages of policymaking can be monitored more quickly, while public criticism and responses can be disseminated widely in a relatively short time. However, increased access to information is not always accompanied by increased openness in the policymaking process. In some situations, the public perceives the regulatory process as being conducted with limited transparency, giving rise to speculation and distrust (Flyverbom et al., 2019).

This situation demonstrates that current democratic issues are not solely related to the existence of formal institutions, but also to the quality of practices within them. The presence of democratic institutions does not automatically guarantee that the political process will operate according to public expectations. Various emerging dynamics demonstrate that challenges to democracy can emerge through gradual processes, often occurring within formal mechanisms themselves. These changes can develop slowly through shifts in decision-making patterns, shifts in power relations, and reduced opportunities for public involvement in the political process (Wiesner et al., 2019).

This study aims to examine the relationship between the implementation of expedited legislative practices and democratic development in Indonesia amid the evolving political dynamics in recent years. The research focuses not only on the technical aspects of rapid law-making processes but also on their broader social and political implications, particularly regarding their potential impact on democratic quality and the sustainability of democratic values in Indonesia's political system.

B. LITERATURE REVIEW

1. Democratic Backsliding

Democratic backsliding is a process of democratic decline that occurs through the gradual weakening of institutions, rules, and mechanisms that have traditionally served to maintain accountability in power. Unlike the rapid and open collapse of democracy through military coups, democratic backsliding generally occurs gradually under governments that retain legitimacy through elections. In this process, democratically elected leaders use their political authority to reduce constraints on executive power, gradually losing their oversight function in the democratic system (Kaufman & Haggard, 2019).

Democratic backsliding cannot be equated with populism, autocratization, or democratic erosion, although these terms are often used interchangeably. Populism refers more to the character or political style of the leader, while autocratization generally describes the strengthening of authoritarian traits in an already authoritarian regime. Meanwhile, the term "democratic erosion" suggests that democratic decline occurs naturally without the actions of specific actors. Democratic backsliding emphasizes deliberate actions by political actors to weaken the democratic system in order to gain or maintain greater power (Jee et al., 2022).

The process of democratic backsliding can occur in various forms. One primary form is electoral manipulation, which involves attempts to alter or influence election mechanisms to reduce the chances of an incumbent leader losing. Another form is executive aggrandizement, or the expansion of executive power, where leaders expand their authority by reducing the role of other institutions such as parliament, the courts, the media, and the political opposition. This can be manifested through changes to election rules, restrictions on media freedom, reductions in the independence of oversight bodies, or unilateral strengthening of executive power (Druckman, 2024).

The impact of democratic backsliding on the political system is far-reaching because this process gradually diminishes the quality of democracy without outright eradication. In the initial stages, the state may still maintain democratic procedures such as elections and the existence of formal institutions, but the substance of democracy begins to weaken. As a result, checks and balances become less effective, government accountability declines, and space for public participation becomes increasingly limited. In the long term, this situation can lead to a shift in the system toward a more centralized and authoritarian government, even though it formally maintains democratic attributes (Adamski, 2019).

2. Fast-Track Legislation

Fast-track legislation is a law-making mechanism that utilizes an accelerated process compared to conventional legislative procedures, intending to address urgent legal needs. This concept is implemented to expedite the deliberation and ratification of draft laws when there is a normative need that requires an immediate response by the state. Unlike conventional legislative mechanisms, which tend to involve lengthy stages, fast-track legislation emphasizes time efficiency without diminishing the fundamental function of formulating laws (Miladmahesi et al., 2023).

The implementation of fast-track legislation in various countries demonstrates that this mechanism is not used for all draft laws, but only in certain circumstances that meet the criteria of urgency. In the United States, for example, this mechanism is used through a system of expedited legislation, while the United Kingdom uses the term fast-track legislation. Meanwhile, New Zealand applies the concept of motion urgency, and France incorporates it directly into its constitution. These differences demonstrate that despite the common goal of accelerating the legislative process, each country has a different design and mechanism to suit the needs of its constitutional system (Čellár, 2022).

In the Indonesian context, the concept of fast-track legislation is seen as a more appropriate alternative to the use of Government Regulations instead of Laws (Perppu) as a rapid legislative instrument. This is because Perppu are essentially created to respond to emergencies, while the need for accelerated legislation does not always arise from emergencies. Therefore, the implementation of fast-track legislation can be a solution by providing a mechanism for faster law-making while maintaining the process of deliberation, oversight, and public participation to maintain the quality of the resulting legal product (Maslul, 2024).

C. METHOD

This research will be conducted using a qualitative approach aimed at understanding various social and political developments related to the practice of Fast-Track Legislation and its implications for the development of democracy in Indonesia. This approach was chosen because this research seeks to examine various developing phenomena through a deep understanding of the relationship between the regulatory formation process, the interactions of political actors, and changes occurring in the practice of democracy. This research focuses not only on observing individual events but also on examining the interconnectedness of various social and political conditions that develop more broadly. Through this approach, the research is expected to provide a more comprehensive picture of the development of Fast-Track Legislation practices and the various conditions that accompany them in the Indonesian political context. Research data will be obtained from various sources relevant to the research focus, including previous research results, scientific articles, books, policy documents, and various other literature sources related to the research theme. Data collection is conducted through a literature review to obtain information that supports the analysis process of the issues being studied. After all research data has been collected, it will be systematically processed

and analyzed through grouping, reduction, and interpretation to identify patterns of relationships and identify findings consistent with the research objectives. These steps are intended to generate a more in-depth discussion, allowing this research to provide a comprehensive understanding of the relationship between rapid legislative practices and socio-political developments that influence the development of democracy in Indonesia (Rukin, 2019).

D. RESULT AND DISCUSSION

1. Political Configuration in Fast-Track Legislation Practices

The development of the regulatory process in Indonesia over the past few years has demonstrated a shift in the way policies are formulated, discussed, and enacted within the national political system. These changes are not only evident in procedural aspects but also in shifting patterns of relationships between the actors involved in the process. While in the previous period, regulatory development tended to proceed through relatively lengthy stages with broader discussion, subsequent developments have seen a tendency for the legislative process to take place in a shorter timeframe. Speed in regulatory development has become an increasingly common characteristic of contemporary political practice. This situation demonstrates that policy formation is no longer solely influenced by state administrative needs but is also influenced by various factors related to power orientation, government needs, and the rapidly changing political environment.

This shift in patterns coincides with increasing demands for effective governance. Various emerging national issues place the government in a position where it is required to produce decisions in a relatively short timeframe. The need to respond to economic, development, investment, and global environmental changes often encourages the issuance of policies that are processed through mechanisms that are faster than before. In certain situations, speed is seen as a manifestation of the state's ability to adapt to constantly changing circumstances. The government needs policy instruments that can be implemented immediately to address various national needs, so the legislative process is then positioned as a tool that must be able to move in line with these demands.

However, the tendency to accelerate the legislative process does not occur in a completely neutral space. The regulatory drafting process is fundamentally part of a political interaction that brings together various interests with differing goals. Each actor involved in policymaking has a different orientation according to their respective interests. In such circumstances, regulatory drafting is not only a means to produce rules but also a space that demonstrates how various interests seek to influence the direction of the policy being enacted. Therefore, the legislative process often develops into an arena that demonstrates the relationship between government needs and broader political interests.

The influence of political interests on the acceleration of the legislative process has become a topic of concern in various discussions regarding the quality of the political process. The acceleration of regulatory drafting is often inseparable from the need to achieve specific political goals within a relatively limited timeframe. In a political system involving various actors with divergent interests, the decision to expedite the deliberation of a regulation can be influenced by various strategic considerations (Averchenkova et al., 2021). These considerations can relate to efforts to maintain government stability, strengthen political positions, fulfill specific policy agendas, or respond to pressure from various parties. As a result, the legislative process is sometimes not only based on the needs of policy substance, but is also influenced by political calculations that develop in a particular period.

This situation demonstrates that the regulatory formation process is closely linked to the policy direction the government wishes to achieve. Every government inherently has a priority agenda during its term. This agenda is then translated into various policies deemed

capable of supporting the achievement of government goals. In this process, regulations play a crucial role because they provide a stronger basis for implementation for various programs and policies. Therefore, the legislative process is often directed to align with the needs of the current government agenda.

The relationship between the government agenda and the direction of policy formation can be seen in the tendency for regulations to emerge that are considered to have a higher priority than others. This prioritization is usually influenced by various considerations related to national interests, social conditions, development needs, and the current political direction of the government. In practice, not all policies receive equal attention. Some policies may receive greater scope for rapid processing, while others require more time for deliberation. These differences demonstrate that the legislative process does not occur uniformly but is instead influenced by various interests developing within the political environment.

In these conditions, the role of various political actors becomes increasingly crucial in determining the direction of regulatory development. The legislative process involves various parties with varying degrees of influence. The government, legislative bodies, political parties, interest groups, and various other elements each have their own positions in influencing the decision-making process. The relationship between these actors does not always occur in a balanced situation, as some actors possess greater political resources than others. These differences in influence can influence the policy-making process, including determining which regulations are deemed deserving of priority deliberation.

The involvement of political actors in the legislative process demonstrates that public policy is not created through a purely technical process. Decisions regarding regulatory priorities are often influenced by the ability of certain actors to build political support, form coalitions, and direct discussions toward desired goals (Haelg et al., 2020). In certain situations, actors with powerful positions within the political structure tend to have greater ability to determine the direction of the legislative process. This can create a situation where regulatory discussions evolve along the lines of interests that garner greater political support than others.

This tendency becomes increasingly apparent when the decision-making process takes place in certain political situations that demand a rapid response from the government. In circumstances perceived as requiring immediate decisions, previously lengthy discussion spaces can become simplified. Expedited decision-making mechanisms often emerge as part of efforts to maintain stability or meet perceived pressing needs. However, such situations can also create changes in political interaction patterns, as deliberations become more focused on achieving results rather than expanding the space for dialogue.

These changes in decision-making patterns impact the overall balance of the political process. Political systems are fundamentally built on relationships involving various elements with complementary functions. When the legislative process proceeds through increasingly rapid mechanisms, there is the potential for changes in the distribution of roles among the involved actors. Some parties may gain greater space in determining policy direction, while others experience limitations in expressing their views or monitoring the ongoing process.

The impact of accelerated legislation is not only related to the resulting policy outcomes but also touches on the relationship between the political process and the quality of public participation. Rapid changes in the pattern of regulatory formation can influence how the public views the political process. When the public perceives that the space for involvement is increasingly limited, the perception that policymaking is largely confined to a specific group can develop. This perception can ultimately impact public trust in the political process and the institutions involved.

2. Changes in Public Participation Space in the Legislative Process

Changes in the regulatory process in Indonesia not only reflect a shift in the way policies are formulated and enacted, but also influence the public's role in the entire process. Public involvement in regulatory development is crucial because the policy process is fundamentally linked to the public interest, which will be impacted by every decision made. Therefore, public involvement is inseparable from the regulatory development process, given that the policies formulated will determine the direction of management in various areas of life, from social and economic aspects, education, employment, and various other issues that affect the wider public. Over time, the scope for public involvement has shown changes influenced by various political conditions, government needs, and the way policymakers incorporate the public into the decision-making process.

In a time of increasing demands for government transparency, public participation has received increasing attention in the policy-making process. Public involvement is no longer viewed merely as a supplementary element in the legislative process but is beginning to occupy a crucial role in supporting the legitimacy of a policy (Kim & Lee, 2019). Various channels for participation have developed, including consultation forums, opinion submissions, public discussions, and the use of digital media, which enable the public to express their views on policies under discussion. The presence of these various platforms initially raised hopes for a more open relationship between policymakers and the public. It was hoped that the legislative process would no longer be closed, but rather develop into a space that allows for a broader exchange of views.

However, evolving political situations and the increasing need for government efficiency have ultimately influenced the form of public involvement in the legislative process. Under various circumstances, there is a tendency for the regulatory development process to take place in a shorter timeframe, affecting the space available for the public to participate in all stages of policy development. This change does not necessarily eliminate direct public participation, but it can affect the intensity and quality of ongoing involvement. The public may still have the opportunity to express their views, but this opportunity may occur in a more limited space and time than before.

This situation then influences the communication patterns formed between policymakers and the public. The relationship between the two parties essentially plays a crucial role in creating a legislative process that accommodates the various interests evolving within society. Open communication allows for the exchange of information, the expression of criticism, and the adjustment of policies to evolving public needs. Conversely, when communication is limited, this relationship can undergo changes that influence public perceptions of the regulatory development process.

This change in communication patterns can be seen in the way information regarding policy development is conveyed to the public. Under ideal conditions, the public has sufficient access to information regarding the regulatory deliberation process, the substance being discussed, and the desired policy direction. This information is crucial because it allows the public to understand the ongoing process and provide relevant responses to the policies being discussed. However, in situations where the legislative process takes place over a relatively short period of time, the delivery of information to the public is sometimes limited. Available information may emerge only a short time before the decision-making process, further limiting the opportunity for conducting research or providing responses.

This situation also indirectly impacts public access to the regulatory drafting process. Access, in this context, relates not only to the public's ability to know that a policy is being discussed, but also to the opportunity to understand the content of the discussion and express their views on it. In practice, not all community groups have the same ability to access information regarding the legislative process. Some groups have greater resources and are able

to follow policy developments more quickly, while others experience limitations in obtaining adequate information.

This difference in access can create conditions where the legislative process is more accessible to certain groups than others. Groups with closer access to information sources or greater capacity to monitor policies tend to have greater opportunities to follow developments in regulatory deliberations. Conversely, community groups with limited resources often face difficulties in understanding ongoing policy changes. As a result, public involvement in the legislative process can develop in an unequal manner.

Changes in the space for public participation in the legislative process demonstrate the interconnectedness of access to information, public involvement, the expression of aspirations, and the relationship between the community and the state. This relationship can be understood through a flow that shows how changes in one element can influence other elements in the policy-making process.

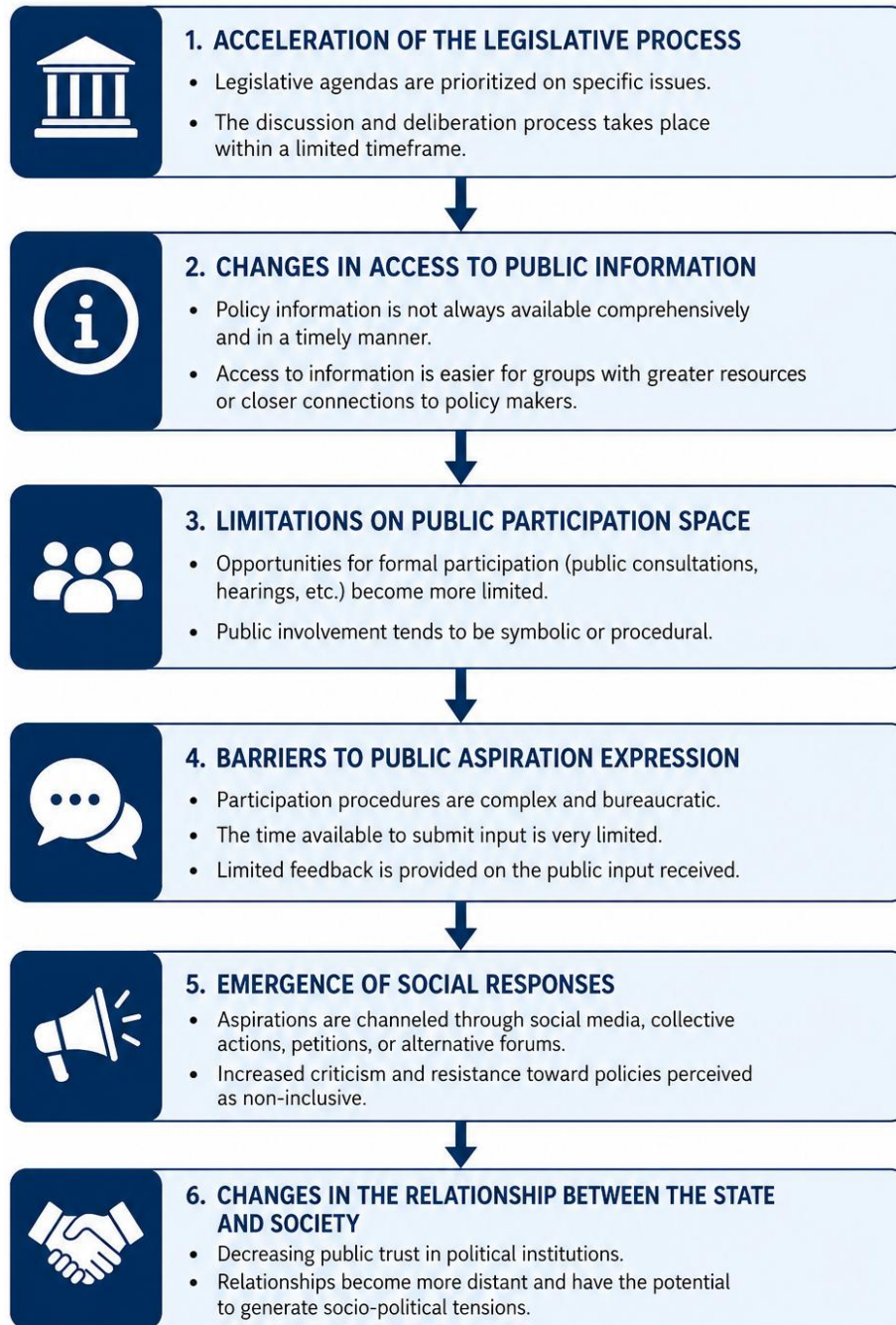


Figure 1. Flow of Changes in Public Participation Space in the Legislative Process

Based on the chart, it is clear that changes in public participation in the legislative process do not occur in isolation, but rather occur through a series of interconnected processes. Accelerating the legislative process can impact public access to information regarding policy formation. These changes then influence the level of public involvement and the public's ability to express their aspirations. This situation can ultimately give rise to various forms of social responses that influence the relationship between society and the state in political life.

In addition to access issues, conveying public aspirations also faces various obstacles that affect the quality of public participation. These obstacles can arise in various forms, including time constraints, communication mechanisms, and prevailing social conditions. In a fast-paced legislative process, the public often faces situations where policy deliberations move faster than the public's ability to understand and respond to the substance being discussed. This

situation results in the public not having sufficient time to conduct in-depth research before expressing their opinions.

Other obstacles can arise from differences in capacity between community groups in expressing their aspirations. Not all groups have the same ability to organize their interests or establish communication channels with policymakers. Some groups have broader networks, making it easier to express their interests, while others struggle due to limited resources or social standing. This situation can create imbalances in the process of expressing aspirations because not all views have an equal opportunity to be heard.

These changes ultimately encourage a variety of responses from social groups to the rapid legislative process. These responses can take different forms depending on how society views the ongoing policymaking process. Some groups choose to engage in discussion and voice criticism through the media or public forums, while others choose a more direct response through various collective activities aimed at expressing objections to the ongoing process (Gagné et al., 2022).

The emergence of these diverse responses demonstrates that society is not entirely passive in the face of changes in the legislative process. Society continues to strive to create alternative spaces to express aspirations when formal channels are deemed insufficient. Advances in communications technology have also influenced these changes, as digital media allows for faster information dissemination and the formation of public opinion. Various community groups can utilize these media to express their views, build support, and broaden discussions on emerging issues.

More broadly, changes in public participation in the legislative process have an impact on the relationship between the state and society. This relationship is not only built through the existence of formal institutions, but also through ongoing interactions within political life. The level of public involvement in the policy-making process influences how society views the state and the legitimacy of its decisions.

When the public perceives sufficient space to participate in the policy-making process, the relationship between the state and society tends to develop through a more open pattern. The public is positioned not only as a recipient of policy but also as a party with a role in determining the direction of that policy. Conversely, if the space for participation is perceived as narrowing, changes in the relationship can emerge, characterized by an increasing distance between policymakers and the public. This situation can impact public trust in political institutions and give rise to various forms of social tension within society.

3. Shifting Power Relations in Public Policy Formation

The process of public policy formation does not essentially occur as a series of administrative activities isolated from the influence of the surrounding political environment. Every policy created through the legislative process is the result of relationships involving various parties with varying interests, resources, and levels of influence. Therefore, the policy formation process not only demonstrates how a rule is formulated but also how power relations operate in determining the direction of the resulting decision. Changes in the Indonesian political system over the past few years demonstrate that the relationships between actors in the policy-making process have evolved, influencing how policies are formulated and which parties gain greater influence throughout the process.

The relationships between actors in the policy-making process are crucial because public policy is fundamentally created through interactions involving various elements with distinct roles. The government, legislative bodies, political parties, community groups, social organizations, economic groups, and various other parties are involved in the process, mutually influencing one another. Each actor enters the policy space with different goals and interests. In this context, policy formation evolves into an interactive space that brings together diverse

interests that do not always share the same orientation. These differing objectives between actors then shape patterns of relationships that can change according to evolving political situations.

In practice, relationships between actors do not occur on completely equal terms. Certain actors possess greater power to influence policy direction due to stronger resources than others. This power can arise through their position in the political structure, economic capacity, institutional networks, or level of access to the decision-making process. These differences in influence mean that interactions within the legislative process do not always provide equal opportunity for all parties involved. As a result, policy formation often tends for some actors to hold a more dominant position than others.

This situation becomes even more complex when the policy-making process is influenced by the presence of groups with vested interests in the policy direction being discussed. Every policy generally has consequences that will impact various sectors of society, so groups that feel a connection to the policy tend to seek to influence the process. This influence can be exerted in various ways, including through expressing opinions, establishing communication with policymakers, and through various other approaches aimed at ensuring that their interests are considered in the deliberations.

The presence of interest groups in the policy-making process is essentially an inseparable part of political life. However, problems arise when the ability of each group to influence policy is unequal. Groups with greater resources tend to have broader access to the decision-making process than groups with limited resources (Rasmussen & Reher, 2023). This situation can create conditions where policy direction is more heavily influenced by certain parties, while other groups have more limited opportunities to express their views or defend their interests.

This change indicates a shift in the distribution of influence occurring in the political process. In previous developments, the policymaking process was often understood as a space that brought together diverse interests more openly through the involvement of various institutions and community groups. However, changing political conditions and increasingly complex government needs have given rise to changes in how influence is distributed within the policy process. In some situations, influence over policy direction appears to be increasingly concentrated in the hands of certain actors with stronger positions within the political structure.

This shift in the distribution of influence is not only related to the increasing role of certain actors but also to the decreasing role of others in the decision-making process. Some actors that previously had significant room to influence policy direction may experience shifts in position due to the development of new political configurations. These changes can arise through the formation of political coalitions, changes in inter-party relations, or various agreements that develop within the national political process. As a result, the distribution of influence in the legislative process is no longer fixed, but rather constantly shifts in response to ongoing changes in inter-actor relationships.

This situation then also influences the position of political institutions in the formation of regulations. Each institution fundamentally has a distinct function within the political system, and its existence is intended to create balance in the decision-making process. However, changes in power relations that develop within the political process can affect how these institutions carry out their roles. Under certain conditions, some institutions gain greater influence in determining policy direction, while others experience limitations in their oversight or balancing functions on ongoing processes.

These changes in the position of political institutions can impact the relationships between institutions within the government system as a whole. Relationships previously built through mechanisms of mutual oversight and complementarity can change when there is a

tendency for a particular party to strengthen its role. This situation can lead to a more centralized decision-making process, limiting the opportunity for an exchange of views. In the long term, this situation can impact the quality of the policy-making process, as the involvement of various parties in the legislative process becomes increasingly unequal.

Changes in power relations can also be seen in the way decisions are made in the policymaking process. Political decisions are not always born through a process based entirely on policy substance, but are often influenced by various considerations related to positions of power, political interests, and evolving relationships between actors. Therefore, the decision-making process often exhibits shifting patterns of relationships influenced by specific political conditions (Ayuningtyas et al., 2021).

In some situations, the decision-making process demonstrates a tendency for policy direction to be determined through a process that focuses more on actors with greater ability to build political support. This ability relates not only to the amount of support they possess but also to their ability to form agreements and consolidate various interests into a particular policy direction. This situation indicates that the resulting decisions are often the result of the power relations that develop within the political process.

The influence of political consolidation plays a crucial role in determining changes in power relations in public policy formation. Political consolidation is often undertaken as an effort to strengthen government stability and ensure more effective implementation of policy agendas. In practice, such consolidation can foster stronger political relationships between various actors with aligned interests. These relationships can then influence the legislative process because the policies discussed receive greater political support.

Conversely, political consolidation can also create changes in the relationship patterns between those in power and those outside the decision-making circle. The stronger the political relationships formed within a particular group, the greater the likelihood of changes in the distribution of influence in the legislative process. This situation can further limit the space for alternative perspectives, as the decision-making process is increasingly influenced by pre-existing political relationships.

4. Socio-Political Implications for the Quality of Democracy in Indonesia

The development of political life in Indonesia demonstrates that the quality of democracy is not only influenced by the existence of formal procedures or institutional mechanisms in place within the government system, but also by the relationships formed between the state, political institutions, and society in the practice of governing the nation. Changes occurring in the policy-making process, decision-making patterns, and relationships between political actors indirectly influence how society views the current political system. The quality of democracy is ultimately determined not only by the state's ability to produce policies but also by how these processes are perceived by the public, as those who receive the impacts of the resulting policies. Therefore, changes occurring in the political process have broader implications because they can influence the patterns of social and political relations that develop within society.

The changing relationship between society and political institutions is a key issue in the development of democracy in Indonesia. The relationship between the two is fundamentally built through a continuous process, encompassing various forms of political interaction. Society views political institutions as the means responsible for managing public interests, while political institutions gain legitimacy through public support and involvement in the ongoing political process. This relationship does not form automatically but develops through society's experience with various policies and decisions made by the state (Putra & Hijri, 2022).

Over time, the relationship between society and political institutions has shown changes influenced by various conditions developing in the national political process. Society today has

a greater level of awareness of various public issues than in previous periods. Advances in information technology and wider public access to various sources of information have given the public a greater ability to follow the ongoing political process. Various government policies can be monitored more easily, while the process of developing regulations can receive wider attention from various community groups. This situation has created a shift in the pattern of relationships, which previously tended to be one-way, towards a more open relationship involving more intensive interaction.

However, increased access to information is not always accompanied by an improvement in the quality of relations between society and political institutions. In some situations, a tendency for distance to grow between society and political institutions arises due to differing perceptions regarding the ongoing decision-making process. When society perceives that the space for involvement is limited or that the policy process is proceeding without adequately involving its aspirations, the perception that political institutions are increasingly moving away from the public interest can arise. This situation can gradually influence how society builds relationships with political institutions, which have long been viewed as representing the common good.

This changing relationship is closely linked to the level of public trust in the political process. Public trust in political institutions is a crucial element in maintaining the sustainability of democracy, as various policies require public acceptance to be effective. Trust is not only built through the government's success in producing policies, but also through the way those policies are formulated and implemented. The public generally pays attention not only to the outcome of a decision but also to the process behind it.

In various developments, the level of public trust in the political process can change when perceptions emerge that decision-making is taking place in a less transparent environment. When the public perceives that the policy-making process is heavily influenced by particular interests or occurs through mechanisms that are difficult for the public to understand, trust in political institutions can gradually decline. This condition does not always manifest itself in outright rejection of the political system, but can develop through increasing skepticism towards various government decisions.

To more empirically examine the changing trends in the relationship between society and political institutions, indicators are needed that can illustrate the development of the quality of democracy and the level of public trust in political institutions. The use of these indicators is important because they can provide a snapshot of the changing political conditions within society and demonstrate how public perceptions of political institutions have changed over a specific period. The following table shows the development of Indonesia's democracy indicators and the level of public trust in political institutions through 2024.

Table 1. Development of the Indonesian Democracy Index and Public Trust in Political Institutions

| Year | Indonesia's Democracy Index Score | Public Trust in the Indonesian House of Representatives |
|------|-----------------------------------|---|
| 2023 | 6.53 | - |
| 2024 | 6.44 | 62.6% |

Source: Economist Intelligence Unit (2024)

Based on this data, Indonesia's democracy score shows a decline from 2023 to 2024. On the other hand, public trust in political institutions remains at a relatively good level. This situation demonstrates that the relationship between society and political institutions does not always develop in a completely parallel direction. A general decline in democracy indicators can occur simultaneously with persistent levels of trust in specific institutions, thus indicating that the quality of democracy is influenced by various interrelated factors and is not determined by a single indicator alone.

This situation can give rise to various forms of social responses within society to public policies issued by the state. Social responses are essentially public reactions to decisions perceived as impacting their lives. These reactions can take various forms depending on the prevailing social conditions and how society understands the policies being discussed. Some groups express their views through public discussions, mass media, and academic forums, while others choose to respond through collective action aimed at attracting the attention of policymakers.

Advances in communication technology have also influenced changes in these social response patterns. Digital media provides a broader space for the public to express opinions, disseminate information, and build support for specific issues. Various community groups can form communication networks that allow for the exchange of information more rapidly than before. This situation is transforming the way the public responds to public policy, as the expression of aspirations is no longer limited to formal mechanisms provided by the state (Walsh, 2020).

However, increased social responsiveness does not always indicate a harmonious relationship between society and political institutions. In some situations, the high intensity of social responses can actually indicate emerging problems within the relationship. The public may use alternative platforms to express their views when formal mechanisms are perceived as inadequate to provide adequate opportunities for public involvement. This situation demonstrates that the public attempts to maintain participation through various means when the political process is perceived as undergoing changes that affect their position in decision-making.

Changes in the relationship between society and political institutions also impact government transparency and accountability. Transparency is closely related to the openness of information regarding the policy-making process, while accountability relates to the government's responsibility for the resulting decisions. Both elements are crucial because the public requires adequate information to understand the direction of state policy and to assess the government's implementation of its responsibilities.

When the political process takes place through mechanisms perceived as less transparent, the public's ability to monitor the resulting decisions may be reduced. Limited information can make it difficult for the public to understand the ongoing process, thus leading to suboptimal oversight of state policy. In situations like this, the relationship between the government and the community can change because the community no longer has the same ability to follow the development of ongoing policies.

These changes have gradually impacted the pattern of public oversight of state policies. Previously, public oversight tended to be conducted through formal mechanisms involving specific institutions and community organizations. However, technological advancements and changes in the social environment have led to a shift in this pattern. Oversight is now increasingly evolving through various digital platforms, enabling the public to directly monitor government policies. A wide range of information can be disseminated quickly, while the public can respond quickly to decisions deemed important.

However, this shift in oversight also presents its own challenges. The increasingly rapid flow of information can lead to differing understandings of emerging policies. The information circulated does not always have the same level of accuracy, which can influence how the public assesses the ongoing political process. This situation demonstrates that changing oversight patterns not only create greater opportunities for public involvement but also raise new issues related to the quality of information and the formation of public perceptions.

More broadly, these changes have long-term consequences for the development of democracy in Indonesia. Democracy does not thrive solely through the existence of formal institutions, but is also influenced by the quality of the relationship between society and the

state. When societies experience changes in their views of political institutions, these changes can impact the long-term sustainability of political relations. The level of public trust, civic engagement, and the quality of communication between the state and society are factors that determine the direction of future democratic development.

If ongoing changes cause a growing distance between society and political institutions, various issues may arise that could impact the overall quality of democracy. The public may show a tendency to reduce their involvement in the political process due to the perception that their expressed aspirations do not have sufficient influence on decision-making. Conversely, if the space for participation is maintained and the relationship between society and political institutions can operate more openly, democratic development has a greater chance of being sustainable.

E. CONCLUSION

The practice of expedited legislation in Indonesia's public policymaking process demonstrates a shift in political relations that influences the direction of democratic development. The regulatory process is no longer solely concerned with the state's administrative needs for effective policymaking, but also with changes in the relationships between political actors, public involvement, and the distribution of influence in the decision-making process. These changes demonstrate that policymaking occurs through relationships involving various interests with varying degrees of influence. In certain situations, accelerating the legislative process can facilitate the government's rapid response to national needs, but at the same time, it can also impact the space for public participation and the balance within the ongoing political process. Furthermore, changes in the space for public participation in the legislative process impact the relationship between the public and political institutions. Limited access to the regulatory process, obstacles to conveying aspirations, and changes in communication patterns between the public and policymakers can impact the level of public involvement in the political process. This situation, in turn, impacts public trust in political institutions and the ongoing decision-making process. The emergence of various social responses from the public demonstrates that the public continues to strive to maintain space for participation through various means when the formal process is deemed incapable of optimally accommodating public aspirations. The various changes occurring in the policy-making process demonstrate broader implications for the quality of democracy in Indonesia. Shifts in power relations, the increasing influence of certain actors in the legislative process, and shifts in patterns of public oversight of state policies can impact the long-term development of democracy. Therefore, the quality of democracy is not solely determined by the existence of formal procedures within the political system but also by the transparency of the decision-making process, the balance of relations between political actors, and the maintenance of space for public participation in the public policy-making process.

REFERENCES

- Adamski, D. (2019). The social contract of democratic backsliding in the “new EU” countries. *Common Market Law Review*, 56(3).
- Averchenkova, A., Fankhauser, S., & Finnegan, J. J. (2021). The impact of strategic climate legislation: evidence from expert interviews on the UK Climate Change Act. *Climate Policy*, 21(2), 251-263.
- Ayuningtyas, D., Haq, H. U., Utami, R. R. M., & Susilia, S. (2021). Questioning the Indonesia government's public policy response to the COVID-19 pandemic: black box analysis for the period of January–July 2020. *Frontiers in Public Health*, 9, 612994.

- Čellár, M. (2022). Fast-track legislative procedure during the COVID–19 pandemic in Slovak parliamentarism. *Comparative Law Review*, 28(1), 315-339.
- Druckman, J. N. (2024). How to study democratic backsliding. *Political Psychology*, 45, 3-42.
- Flyverbom, M., Deibert, R., & Matten, D. (2019). The governance of digital technology, big data, and the internet: New roles and responsibilities for business. *Business & Society*, 58(1), 3-19.
- Gagné, M., Parker, S. K., Griffin, M. A., Dunlop, P. D., Knight, C., Klonek, F. E., & Parent-Rocheleau, X. (2022). Understanding and shaping the future of work with self-determination theory. *Nature reviews psychology*, 1(7), 378-392.
- Haelg, L., Sewerin, S., & Schmidt, T. S. (2020). The role of actors in the policy design process: Introducing design coalitions to explain policy output. *Policy Sciences*, 53(2), 309-347.
- Hausknost, D., & Hammond, M. (2020). Beyond the environmental state? The political prospects of a sustainability transformation. *Environmental politics*, 29(1), 1-16.
- Hinterleitner, M., Knill, C., & Steinebach, Y. (2024). The growth of policies, rules, and regulations: A review of the literature and research agenda. *Regulation & Governance*, 18(2), 637-654.
- Jee, H., Lueders, H., & Myrick, R. (2022). Towards a unified approach to research on democratic backsliding. *Democratization*, 29(4), 754-767.
- Kaufman, R. R., & Haggard, S. (2019). Democratic decline in the United States: What can we learn from middle-income backsliding?. *Perspectives on Politics*, 17(2), 417-432.
- Kim, S., & Lee, J. (2019). Citizen participation, process, and transparency in local government: An exploratory study. *Policy Studies Journal*, 47(4), 1026-1047.
- Mahmud, R. (2021). What explains citizen trust in public institutions? Quality of government, performance, social capital, or demography. *Asia Pacific Journal of Public Administration*, 43(2), 106-124.
- Maslul, S. (2024). Presidential Emergency Legislation in Indonesia: A Comparative Study of Fast-Track Mechanisms in Ecuador and Colombia. *Asy-Syir'ah: Jurnal Ilmu Syari'ah dan Hukum*, 58(1), 225-240.
- Miladmahesi, R., Setiadi, W., Sadiawati, D., & Bakhtiar, H. S. (2023). The Possibility of the Implementation of Fast-Track Legislation in Indonesia. *Padjadjaran Jurnal Ilmu Hukum (Journal of Law)*, 10(1), 101-121.
- Napitupulu, C. A., Dompok, T., & Salsabila, L. (2024). Comparative analysis of political dynamics and public policy in infrastructure development: A study of Indonesia and India. *Journal of Contemporary Local Politics*, 3(1), 15-27.
- Putra, B. K., & Hijri, Y. S. (2022). Participation of the State and Civil Society in the Democracy System in Indonesia. *Jurnal Ilmiah Wahana Pendidikan*, 8(24), 235-247.
- Rasmussen, A., & Reher, S. (2023). (Inequality in) interest group involvement and the legitimacy of policy making. *British Journal of Political Science*, 53(1), 45-64.
- Rosenbloom, D., Meadowcroft, J., & Cashore, B. (2019). Stability and climate policy? Harnessing insights on path dependence, policy feedback, and transition pathways. *Energy Research & Social Science*, 50, 168-178.
- Rukin, S. P. (2019). *Metodologi penelitian kualitatif*. Yayasan Ahmar Cendekia Indonesia.
- Salvador, M., & Sancho, D. (2023). Local governments facing turbulence: Robust governance and institutional capacities. *Social Sciences*, 12(8), 462.
- Syukri, M. (2024). Indonesia's new developmental state: Interrogating participatory village governance. *Journal of Contemporary Asia*, 54(1), 2-23.
- Walsh, J. P. (2020). Social media and moral panics: Assessing the effects of technological change on societal reaction. *International Journal of Cultural Studies*, 23(6), 840-859.

Wiesner, K., Birdi, A., Eliassi-Rad, T., Farrell, H., Garcia, D., Lewandowsky, S., ... & Thébault, K. (2019). Stability of democracies: a complex systems perspective. *European Journal of Physics*, 40(1), 014002.